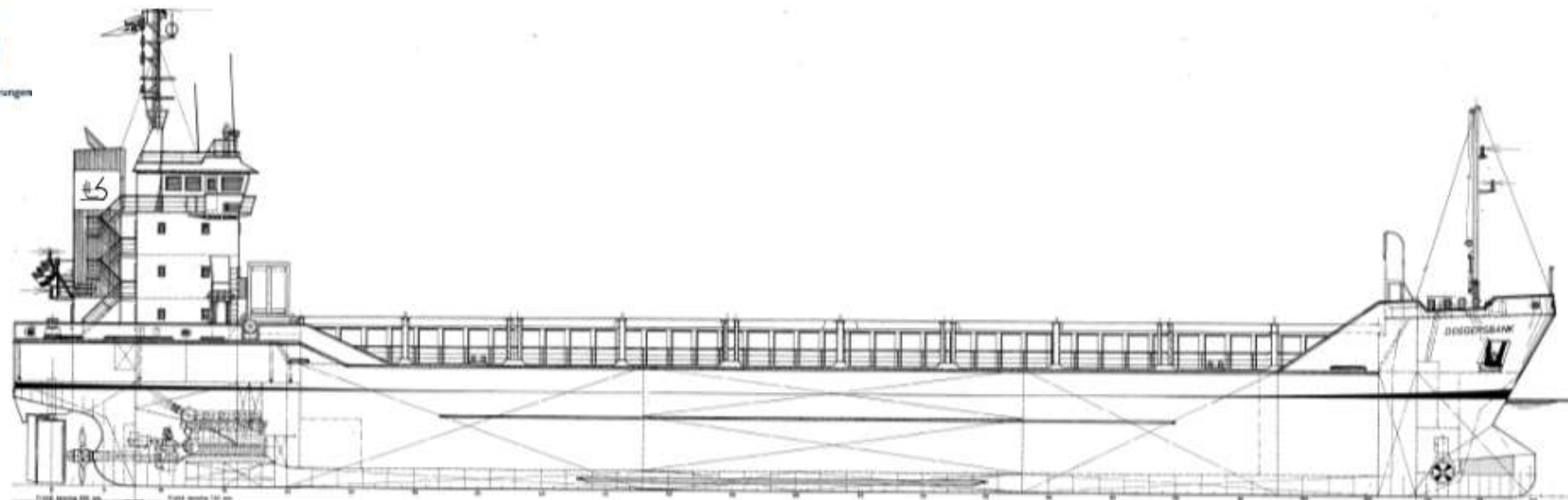




Hermann Lubmann Reedereien
GmbH & Co. KG
Ship Management



Name	Ultramar (IMO 9167320) – Cyprus Flag	
Shipyards	Bodewes Hoogezand, NL	
Built	1997	
Type	gearless singledecker	
Classification	DNVGL +HULL +MACH General cargo ship; Container ship Unrestricted navigation Ice class E3 / AUT-UMS	
Main Dimensions		
Length over all	89,72	m
Length between perpendiculars	84,98	m
Breadth moulded	13,60	m
Draught moulded	5,71	m
Air Draught (incl. draught)	31,50	m
Depth to maindeck moulded	7,20	m
Clear height in hold	8,35	m
Deadweight (about)	4.065	tdw
at 5,71m draught (summer)	3.800	dwcc
at 5,59m draught (winter)	3.700	dwcc
Measurement		
GT/NT	2.820 / 1.503	
Service-Speed (bft 2, even keel)	10,00	knts
Main Engine		
1 MAK 8M25 C - Rated power	2.400	kW
Propeller	1 x CPP	lefthand
Consumption at sea MGO/day fully laden	6,30/0,25	mts
Consumption in port MGO/day idle	0,70	mts

Reduction gear

1 reduction gear

Auxiliary engines

2 Diesel generator sets, SCANIA 6DS9 135 kw-50Hz
1 emergency/harbour generator set type Valmet, 70 kVA-50Hz
2 starting air compressors
2 Separators: 1x IFO, 1x Luboil
1 Fuel oil trim pump
1 bilge water separator, acc. to Marpol regulations
2 bilge/ballast pumps, each 150 m³/hr a 2,80 bar
1 Fire Fighting pump
1 sewage pump
1 freshwater pressure set
1 CO₂ Fire Fighting system for engine room and cargo hold

Bowthruster

1 x FPP type fishtail - Output 200 kW

Tank capacities

Ballast	1.551,00 m ³
MGO	342,40 m ³
Potable water	62,00 m ³

Cargo capacity

Boxshaped hold narrowing fore and aft; see separate drawing
Hold (grain) 5.628 m³/198.000 cbft
Dimensions cargo hold l¹xw¹xh 62,88 x 11,00 x 8,35 m
Square meter capacity tanktop/hatch 15,00/1,70 mts

Steering Gear

Electrical hydraulic steering gear

Anchor and moving winches

1 electrical driven bow anchor winch with two warping heads
1 electrical driven capstan aft

Deck layout

Rudder, Becker type
Container fittings on tanktop and on hatch covers
Lashing eyes in hold and outside of coaming
Moveable grain bulkhead (4 pcs) transversible to tweendeck (38,8m)

Weather deck hatch covers

Steel pontoon hatches with 1 gantry crane
Dimensions approx 62,88 x 11,00 m

Air change elec. driven 6 times

Container intake

In hold	111 TEU
On hatch	135 TEU
Total	246 TEU

Communication equipment

According GMDSS for Area A3, UMTS, Inmarsat, FB

Accommodation

For Captain and Crew of a total 10 persons with heating, ventilation and air-conditioning

Details are given in good faith, believed to be correct, but without guarantee. All figures to read "about" and not to be used for T/C-descriptions Speed basis max. beaufort 2, no swell and no adverse currents. Any Days during which the vessel encounters conditions exceeding these weather conditions are expressly excluded regarding performance evaluation.