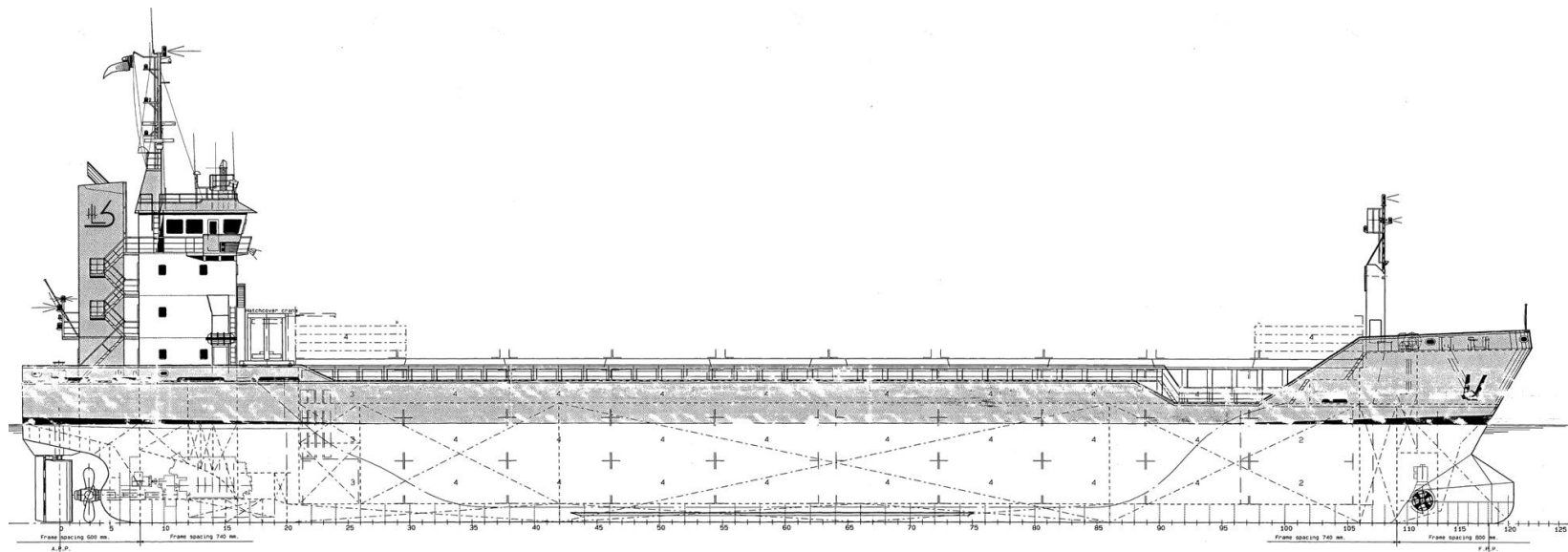




Hermann Lohmann Bereederungen  
GmbH & Co. KG  
Ship Management



**Name** HERMAS (IMO 9224166) – Cyprus Flag  
**Shipyard** Scheepswerft Pattje B.V. Hoogezand, NL  
**Built** 2000  
**Type** gearless singledecker  
**Classification** GL + 100 A5 E G General Cargo Ship,  
 Strengthened for Heavy Cargo  
 equipped for the carriage of container  
 + MC AUT  
 SOLAS II-2 reg. 19

**Main Dimensions**

Length over all	89,75	m
Length between perpendiculars	84,98	m
Breadth moulded	13,60	m
Draught moulded	6,37	m
Air Draught (incl. draught)	29,30	m
Depth to maindeck moulded	7,20	m
Clear height in hold	8,35	m

**Deadweight (about)**

at 6,37m draught (summer)	4.885	tdw
at 6,42m draught (winter)	4.737	tdw

**Measurement**

GT/NT	2.829 / 1.548
-------	---------------

**Service-Speed** (bft 2, even keel) 10,00 knts

**Main Engine**

1 of MAK		
6M25 - Rated power	1800	kW

<b>Propeller</b>	1 x CPP	
<b>RPM</b>	750	

**Consumption at sea** IFO180/MGO/day fully laden 5,80 / 0,20 mts

**Consumption in port** MGO/day idle 0,50 mts

**Reduction gear**

1 reduction gear

**Auxiliary engines**

2 Diesel generator sets, SCANIA DS9 135 kw-50Hz  
 1 emergency/harbour generator set type SISU, 110 kVA-50Hz  
 2 starting air compressors  
 3 Separators: 1x IFO, 1x MGO, 1x Luboil  
 1 Fuel oil trim pump  
 1 bilge water separator, acc. to Marpol regulations  
 2 bilge/ballast pumps, each 150 m<sup>3</sup>/hr a 2,80 bar  
 1 Fire Fighting pump  
 1 sewage pump  
 1 freshwater pressure set  
 1 CO<sub>2</sub> Fire Fighting system for engine room and cargo hold

**Bowthruster**

3 Steps	225 kW
---------	--------

**Tank capacities**

Ballast	1856,00 m <sup>3</sup>
IFO/MGO	218,96 m <sup>3</sup>

Potable water	53,60 m <sup>3</sup>
---------------	----------------------

**Cargo capacity**

Boxshaped hold narrowing fore and aft; see separate drawing  
 Hold (grain) 5498 m<sup>3</sup>  
 Dimensions cargo hold l<sub>x</sub>w<sub>x</sub>h 62,88 x 11,00 x 8,35 m  
 Square meter capacity tanktop/hatch 15,00 / 1,60 mts

**Steering Gear**

Electrical hydraulic steering gear

**Anchor and moving winches**

1 electrical driven bow anchor winch with two warping heads  
 1 electrical driven capstan aft

**Deck layout**

Rudder, Becker type  
 Container fittings on tanktop and on hatch covers  
 Lashing eyes in hold and outside of coaming  
 Moveable grain bulkhead (2 pcs) with 7 stowage positions

**Weather deck hatch covers**

Steel pontoon hatches with 1 gantry crane  
 Dimensions approx 62,70x10,10 m

**Air change** elec. driven 6 times

**Container intake**

In hold	111 TEU
On hatch	76 TEU
<b>Total</b>	<b>187 TEU</b>

**Communication equipment**

According GMDSS for Area A3, eMail-Terminal

**Accommodation**

For Captain and Crew of a total 10 persons with heating, ventilation and air-conditioning

Details are given in good faith, believed to be correct, but without guarantee.  
 All figures to read "about" and not to be used for T/C-descriptions Speed basis max.  
 beaufort 2, no swell and no adverse currents. Any Days during which the vessel encounters conditions exceeding these weather conditions are expressively excluded regarding performance evaluation.